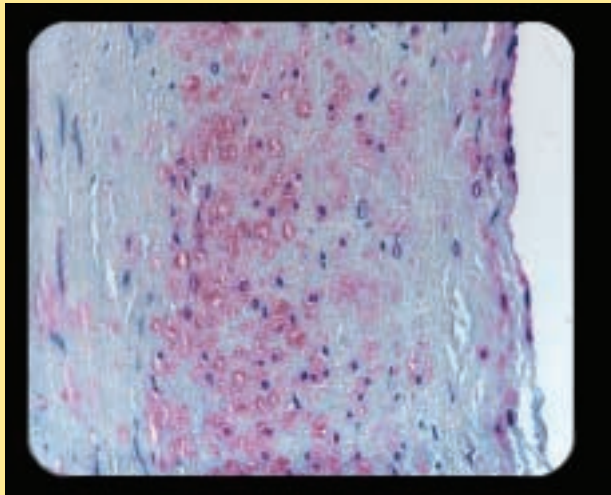


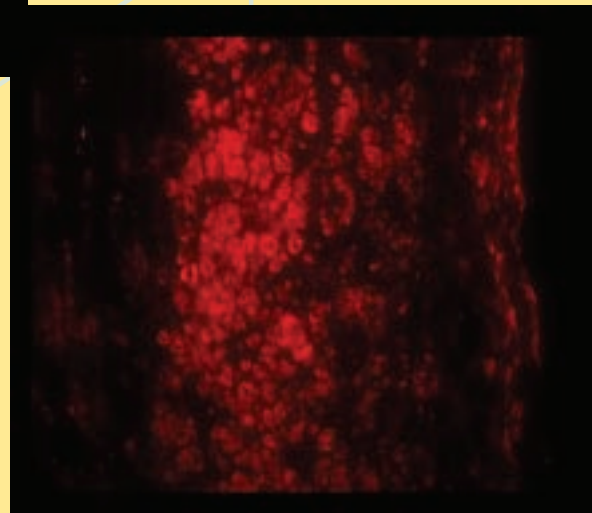
# HUMAN HEART

Brightfield and fluorescent digital photomicrographs of a coronary artery from a failed human heart allograft stained for oxidatively modified lipoprotein, which indicates early atherosclerosis.



brightfield  
←

fluorescent  
→



Research/Image Credit:  
Courtesy of Dr. Bruce McManus

sunday	monday	tuesday	wednesday	thursday	friday	saturday
					1	2
3	4	5	6	7	8	9
10	11	12	13	14 St. Valentine's Day	15	16
17	18	19	20	21	22	23
24	25	26	27	28		

**FEBRUARY**  
2002

**Dr. BRUCE  
MCMANUS**



**Director of the Institute of Circulatory and Respiratory Health**

**Mandate:** to support research into causes, prevention, screening, diagnosis, treatment, support systems, and palliation for a wide range of conditions associated with the heart, lung, brain, blood and blood vessels.

Bruce McManus will lead the development and implementation of a strategic research plan for addressing outstanding questions related to cardiac, respiratory, vascular, brain (stroke), blood, and sleep disorders and diseases.

Dr. McManus joined the Faculty of Medicine of the University of British Columbia as Department Head of Pathology and Laboratory Medicine in July 1993.

The focus of Dr. McManus' investigative program is inflammatory diseases of the heart and blood vessels, with particular emphasis on enteroviral infections of the heart and transplant vascular disease. His work has relied on epidemiological, clinical trials and basic science strategies.